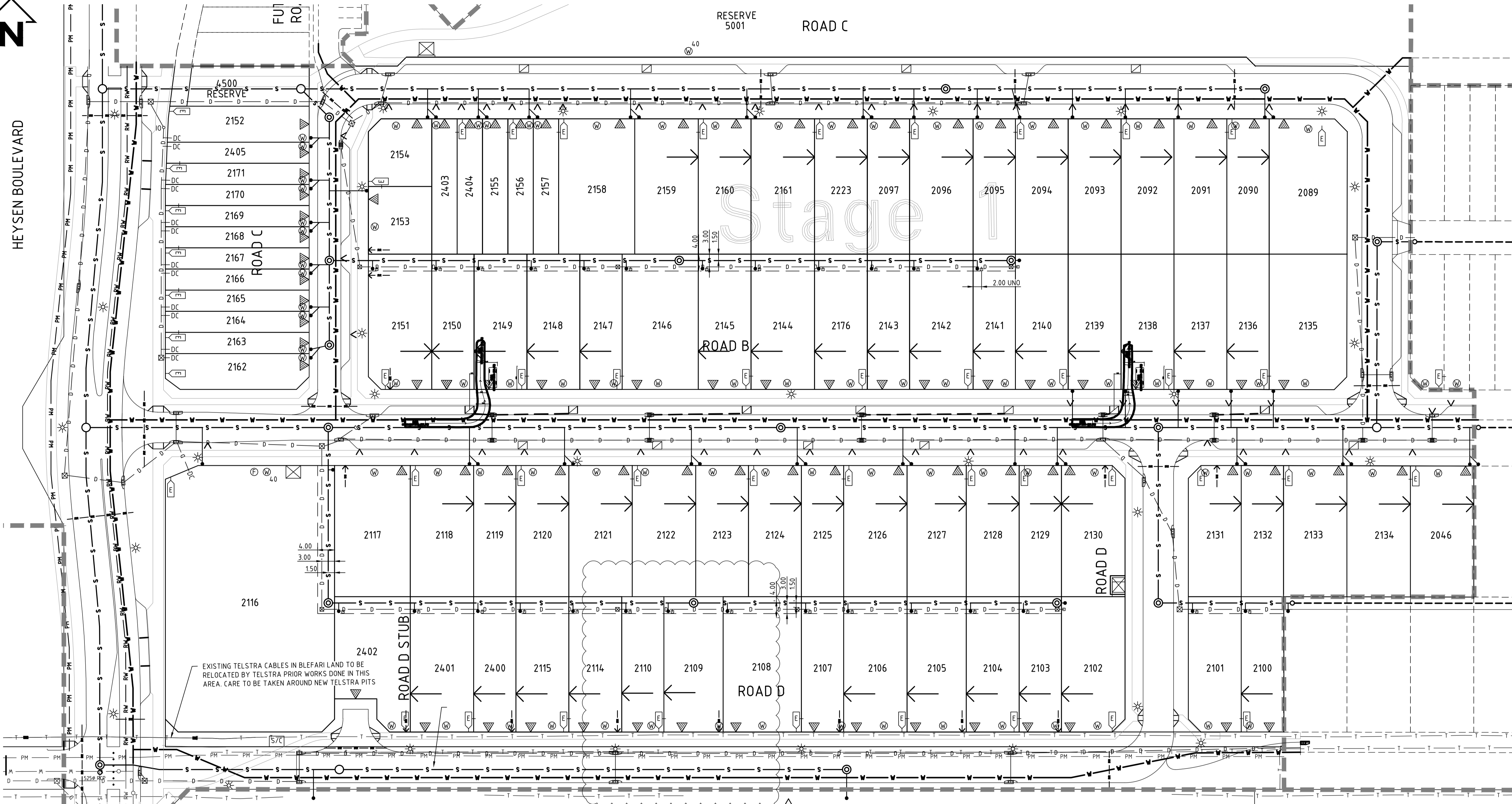


HEYSEN BOULEVARD

RESERVE 5001 ROAD C



EXISTING TELSTRA CABLES IN BLEFARI LAND TO BE RELOCATED BY TELSTRA PRIOR WORKS DONE IN THIS AREA. CARE TO BE TAKEN AROUND NEW TELSTRA PITS

EXISTING NBN TO BE RELOCATED. REFER NBN DRAWINGS. EXISTING CABLE TO BE DEMOLISHED FOLLOWING COMPLETION OF NEW WORKS.

**NOTES**

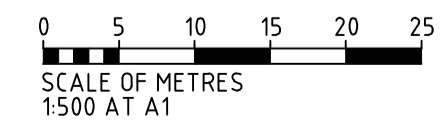
1. THE SERVICES INFORMATION INDICATED ON THIS DRAWING IS BASED ON FIELD OBSERVATIONS AND DETAILS PROVIDED BY SERVICE AUTHORITIES. GREENHILL ENGINEERS DOES NOT GUARANTEE THAT THE DETAIL OR EXTENT OF SERVICES INFORMATION SHOWN IS ACCURATE OR COMPLETE. THE CONTRACTOR SHALL CONFIRM LOCATION AND DEPTH OF ALL EXISTING SERVICES PRIOR TO COMMENCEMENT OF CONSTRUCTION. LANSCOR COMMUNITIES, GREENHILL ENGINEERS PTY LTD, CONSULTANTS, SERVANTS OR AGENTS SHALL NOT BE LIABLE FOR ANY LOSS OR DAMAGE CAUSED OR OCCASIONED BY THE USE OF THIS SERVICES INFORMATION.
2. THE CONTRACTOR SHALL CONFIRM THE LOCATION OF ALL EXISTING SERVICES PRIOR TO COMMENCEMENT OF CONSTRUCTION. THE CONTRACTOR SHALL MAKE ARRANGEMENTS WITH THE RELEVANT AUTHORITIES TO RELOCATE SERVICES AS NECESSARY TO RESOLVE CLASHES IN CONSULTATION WITH THE SUPERINTENDENT. ANY REPAIRS TO DAMAGED SERVICES WILL BE COMPLETED AT THE CONTRACTOR'S COST.
3. SERVICES SHOWN ON THESE SHEETS ARE FOR COORDINATION PURPOSES ONLY. FOR DETAILS OF EACH SERVICE REFER TO THE APPROVAL DRAWINGS FOR THAT SERVICE:  
STORMWATER DRGS: 13-1361-025, 026, 027 AND 028  
SEWER DRGS: 16-1361-SE01 - SE04  
RECYCLED WATER DRG: 16-1361-038  
ELECTRICAL DRGS: xxxxxxxxx

**LEGEND**

	ZERO LOT LINE		SEWER CONNECTION		100° INSPECTION POINT
	STORMWATER DRAIN		POTABLE WATER MAIN		RECLAIMED WATER
	SIDE ENTRY PIT		POTABLE WATER CONNECTION		IRRIGATION CONDUIT
	JUNCTION BOX		FIRE HYDRANT CONNECTION		SEWER PUMPING MAIN
	GRATED INLET PIT		ELECTRICAL CONNECTION POINT		IRRIGATION UNDER FOOTPATH
	REAR OF LOT DRAINAGE CONNECTION		ELECTRICAL TRANSFORMER		TREE PIT \ ROOT TRENCH
	FRONT OF LOT DRAINAGE CONNECTION		ELECTRICAL SWITCHING CUBICLE		LIGHT POLE
	ROOF WATER KERB INSERT		EXISTING TELSTRA		EXISTING SEWER PUMPING MAIN
	DRIVEWAY LOCATION		IRRIGATION CONDUIT 100mm upvc		
	SEWER MAIN		TEMPORARY SWALE		
	SEWER STRUCTURES		100mm PVC PIPE		

**FOR CONSTRUCTION**

REVISION	DATE	DESCRIPTION	DESIGN	DRAWN	APPROVED
4	07.04.2017	LOT NUMBERS REVISED	NBM	NBM	
3	27.03.17	CHANGES TO SERVICES FOR LOTS 2224 AND 2225	KDA	KDA	
2	13.02.17	WATER CONN LOCATIONS REVISED	NBM	NBM	
1	08.02.17	STORMWATER AND WATER ALIGNMENT REVISED	NBM	NBM	
0	20.12.16	ISSUED FOR CONSTRUCTION	NBM	NBM	
E	14.12.16	REVISED AS PER VERIFICATION	NBM	NBM	
D	09.12.16	REVISED AS PER COUNCIL COMMENTS	NBM	NBM	



DESIGN	NBM	DESIGN CHECK	BJC
DRAWN	NBM	DRAFTING CHECK	BJC
APPROVED		DATE	
CAD FILE: 16-1361-025			
<b>A1</b>			

**GREENHILL**

Level 1, 64 Hindmarsh Square  
Adelaide SA 5000  
T: 08 8406 1300  
F: 08 8215 0018



LANSCOR COMMUNITIES  
BLEFARI STAGE 1  
MOUNT BARKER

SERVICES LAYOUT PLAN

DRAWING NUMBER  
**16-1361-030**

REVISION  
**4**