



**ASTON HILLS**  
*at Mount Barker*

*The Wimbledon Collection*



Artist Impression Only

 **TURNKEY SOLUTIONS**

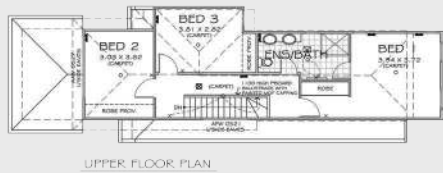
[astonhills.com.au](http://astonhills.com.au)

# FLOOR PLANS



LOT 603

FIXED PRICE  
\$360,600  
Move in ready!



UPPER FLOOR PLAN

LOT 154



LOT 153



LOT 152

1. House and land are sold separately under separate contracts. 2. Lanser is responsible for the sale of land only and will not be liable for any loss or damage arising out of or relating to the building contract and/or construction of the house. 3. All drawings, photographs, images and renderings are for illustrative purposes only and may show items which do not form part of the house and land package. 4. Pricing is based on a specific house and land combination. The price of the house and/or land and the plans, specifications and inclusions for the house are subject to change without notice and may also vary in circumstances provided for in the house or land contract. The price does not include stamp duty or any other fees or charges relating to the purchase of the land or house construction. 5. Purchasers should confirm all plans, specifications, inclusions and pricing with Lanser and the builder prior to contract. 6. All houses are subject to Council and other authority approvals prior to construction commencing. 7. Please contact your sales consultant and/or builder for more information. Every care has been taken to ensure all details are correct at time of printing. E&OE.  
\* Pricing refers to Lot 154 as at April 2019.

# Contemporary Hills Living



The Wimbledon Collection is a celebration of stylish hills living. Compact and cosmopolitan, this limited selection of architecturally designed homes offer an affordable, sophisticated and low-maintenance place to call home at the heart of Aston Hills.

These exclusive homes are within walking distance to the Aston Hills Village Centre and come as a turn-key package. Each home comes complete with flooring throughout, fencing, paving and landscaping plus more. This means on moving day, all you have to do is move your furniture in and make yourself at home...



Perfect for retirees, first home buyers and investors alike, the Wimbledon Collection at Aston Hills will be built by quality SA home builder Samata Homes and will feature stainless steel appliances by De'Longhi.

To find out more, register your details today.

[astonhills.com.au/turnkey-collections/](http://astonhills.com.au/turnkey-collections/)



FOR MORE INFORMATION

 **0452 136 091**

admin@astonhills.com.au

Lanser Realty Pty Ltd RLA | 268669



[astonhills.com.au](http://astonhills.com.au)

