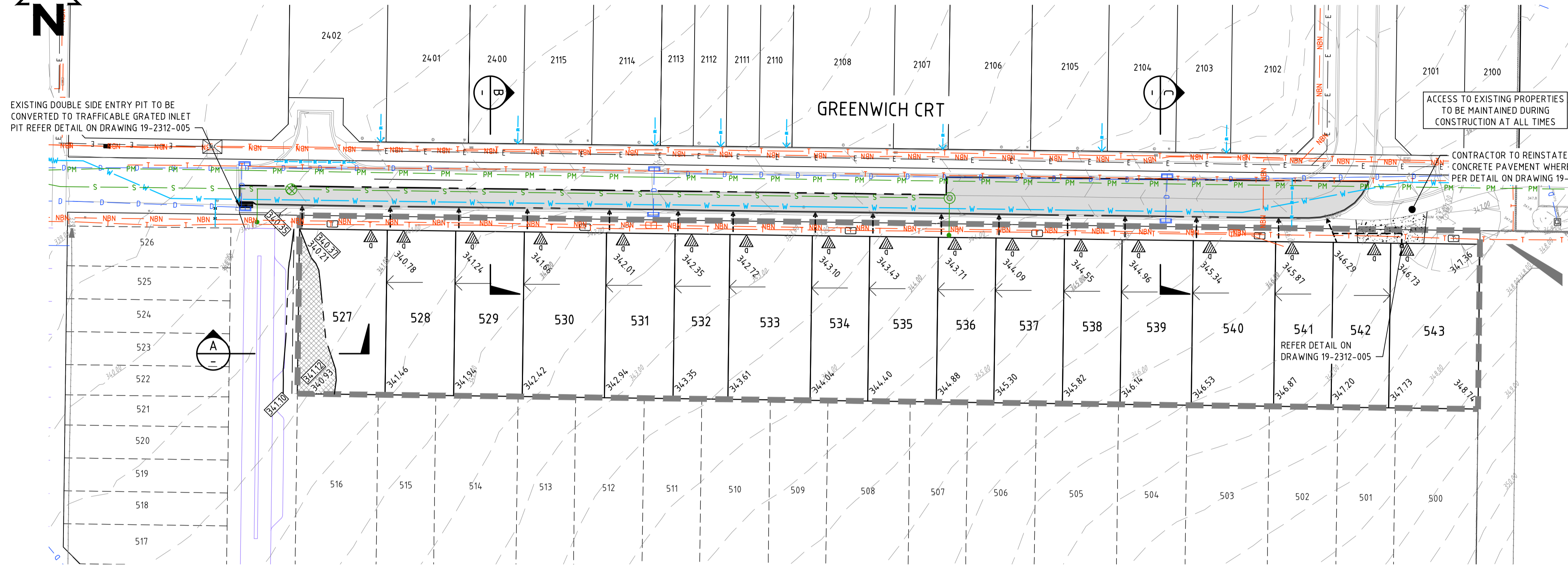


EXISTING DOUBLE SIDE ENTRY PIT TO BE CONVERTED TO TRAFFICABLE GRATED INLET PIT REFER DETAIL ON DRAWING 19-2312-005

ACCESS TO EXISTING PROPERTIES TO BE MAINTAINED DURING CONSTRUCTION AT ALL TIMES

CONTRACTOR TO REINSTATE EXISTING CONCRETE PAVEMENT WHERE REQUIRED AS PER DETAIL ON DRAWING 19-2312-005.

GREENWICH CRT

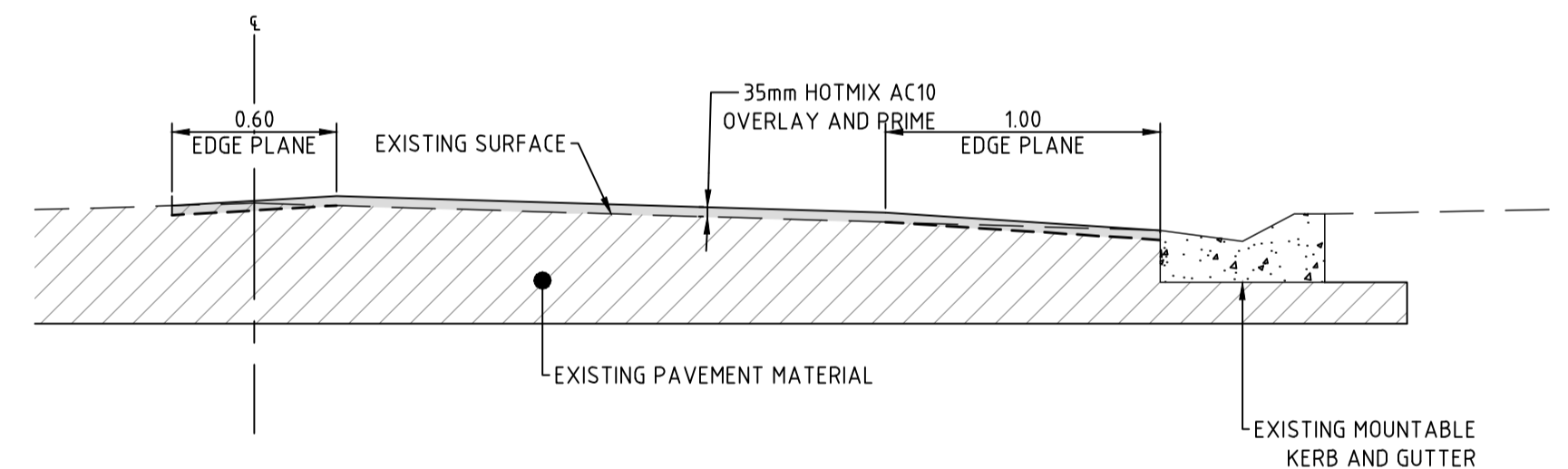


NOTES:

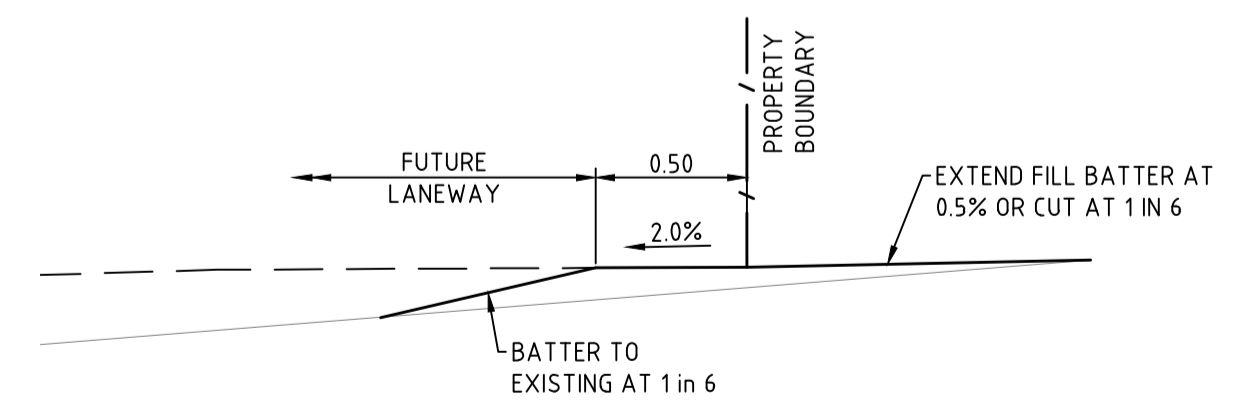
1. ALL LEVELS ARE TO AUSTRALIAN HEIGHT DATUM (AHD). THE SURVEY COORDINATE SYSTEM IS MGA 94.
2. FOR SETOUT CO-ORDINATE REFERENCE POINTS THE CONTRACTOR SHALL CONTACT FYFE SURVEYORS.
3. THE EXISTING SURVEY SHOWN IS FOR INFORMATION ONLY. THE CONTRACTOR SHALL VISIT THE SITE AND IDENTIFY ANY CHANGES DUE TO DEMOLITION OR PREVIOUS STAGE WORKS.
4. THE CONTRACTOR SHALL CONFIRM ALL LEVELS AND DIMENSIONS ON SITE PRIOR TO COMMENCING CONSTRUCTION OR ORDERING MATERIALS.
5. THE CONTRACTOR SHALL CONFIRM THE LOCATION OF ALL EXISTING SERVICES PRIOR TO COMMENCEMENT OF CONSTRUCTION. THE CONTRACTOR SHALL MAKE ARRANGEMENTS WITH THE RELEVANT AUTHORITIES TO RELOCATE SERVICES AS NECESSARY TO RESOLVE CLASHES IN CONSULTATION WITH THE SUPERINTENDENT. ANY REPAIRS TO DAMAGED SERVICES WILL BE COMPLETED AT THE CONTRACTORS COST.
6. DO NOT STRIP TOPSOIL OR SURFACE MATERIALS EXCEPT FROM AREAS SPECIFICALLY REQUIRED TO BE WORKED IN CONSTRUCTING THE WORKS DEFINED BY THESE DRAWINGS OR THE CONTRACT. NO TOPSOIL SHALL BE REMOVED FROM SITE UNLESS DIRECTED BY THE SUPERINTENDENT.
7. THE CONTRACTOR SHALL REINSTATE AND RE-VEGETATE ALL SURFACES THAT ARE STRIPPED INCLUDING THOSE FOR WHICH STRIPPING IS NOT SPECIFICALLY REQUIRED. REINSTATEMENT AND RE-VEGETATION SHALL BE UNDERTAKEN IN ACCORDANCE WITH THE TECHNICAL SPECIFICATION REQUIREMENT FOR UNPAVED AREAS.
9. ALL TREES SHALL REMAIN UNLESS NOTED OTHERWISE. REFER ARBORIST REPORT FOR TREE REMOVAL. ALL TREE REMOVALS REQUIRE PRIOR APPROVAL.
10. TREE PROTECTION ZONES (TPZ) SHALL BE ESTABLISHED AROUND ALL REGULATED AND/OR SIGNIFICANT TREES WITHIN THE WORKS AREA PRIOR TO COMMENCEMENT OF ANY EARTHWORKS. NO PERSONS, VEHICLES OR MACHINERY SHALL ENTER THE TREE PROTECTION ZONES WITHOUT THE CONSENT OF THE SUPERINTENDENT AND COUNCIL. TREE PROTECTION ZONES SHOWN INDICATIVELY. CONTRACTOR SHALL ENGAGE ARBORIST TO CONFIRM ALL TPZ REQUIREMENTS PRIOR TO WORKS COMMENCING ON SITE.
11. MATCH NEW CONSTRUCTION NEATLY TO EXISTING ROADS AT LIMIT OF WORKS AFTER SAW CUTTING AND REMOVING EXISTING PAVEMENT, SEAL AND KERBING.
12. ALL EXISTING SERVICE PIT COVERS SHALL BE ADJUSTED TO MATCH NEW SURFACE LEVEL AND GRADE.
13. THE CONTRACTOR SHALL PROVIDE A TRAFFIC MANAGEMENT PLAN TO MOUNT BARKER DISTRICT COUNCIL AND OBTAIN APPROVAL PRIOR TO COMMENCING WORKS.
14. FOR ELECTRICAL SERVICES, CST OR LIGHT POLE LOCATIONS REFER ELECTRICAL DRGS. THE LOCATION OF THESE SERVICES AS SHOWN ON 19-2312-003 IS INDICATIVE ONLY.
15. EXISTING ROADS TO HAVE NEW PAVEMENT OVERLAY. REFER 19-2312-005 FOR DETAILS.
16. CONTRACTOR SHALL CONFIRM ALLOTMENT BOUNDARY PEGS ARE IN PLACE AND MARK PROPOSED DRIVEWAY LOCATIONS ON SITE PRIOR TO CONSTRUCTION OF ANY UNDERGROUND SERVICES. ANY CONFLICTS BETWEEN DRIVEWAYS AND/OR SERVICES PITS ARE TO BE RAISED IMMEDIATELY WITH THE SUPERINTENDENT.

LEGEND

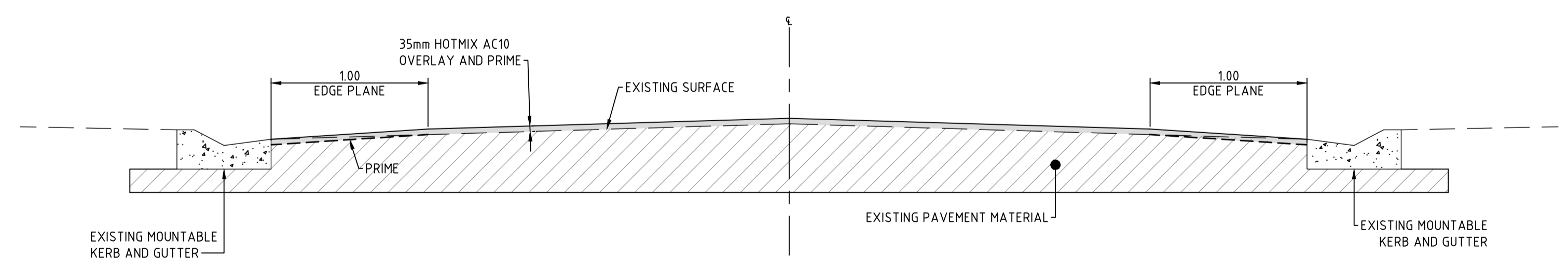
PROPOSED	EXISTING
	WATER MAIN
	SEWER MAIN
	SEWER PUMPING MAIN
	TELECOMMUNICATIONS
	NBN CONDUIT
	ELECTRICAL
	NBN PIT
	STORMWATER DRAIN
	KERB
	SURFACE CONTOUR (0.5m INC.)



SECTION B
NTS



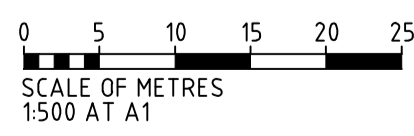
SECTION A
NTS



SECTION C
NTS

NOT FOR CONSTRUCTION

REVISION	DATE	DESCRIPTION	DESIGN	DRAWN	APPROVED
D	31.08.20	HOLD POINT NOTE ADDED	KDA	KDA	
C	12.08.20	ISSUED FOR APPROVAL	KDA	KDA	
B	24.07.20	ISSUED FOR APPROVAL	KDA	KDA	
A	10.07.20	ISSUED FOR REVIEW	KDA	KDA	



DESIGN	KDA	DESIGN CHECK	CDH
DRAWN	KDA	DRAFTING CHECK	CDH
APPROVED		DATE	
CAD FILE: 19-2312-002			
A1 THIS DRAWING REMAINS THE PROPERTY OF GREENHILL ENGINEERS PTY LTD AND MAY NOT BE COPIED IN ANY WAY WITHOUT PRIOR APPROVAL FROM THIS COMPANY. © GREENHILL ENGINEERS PTY LTD			

GREENHILL
Level 1, 178 Fullarton Road
Dulwich, SA 5065
T: 08 8406 1300



LANSER COMMUNITIES
ASTON HILLS STAGE 12A
MOUNT BARKER
GENERAL CONSTRUCTION LAYOUT PLAN

DRAWING NUMBER	REVISION
19-2312-002	D