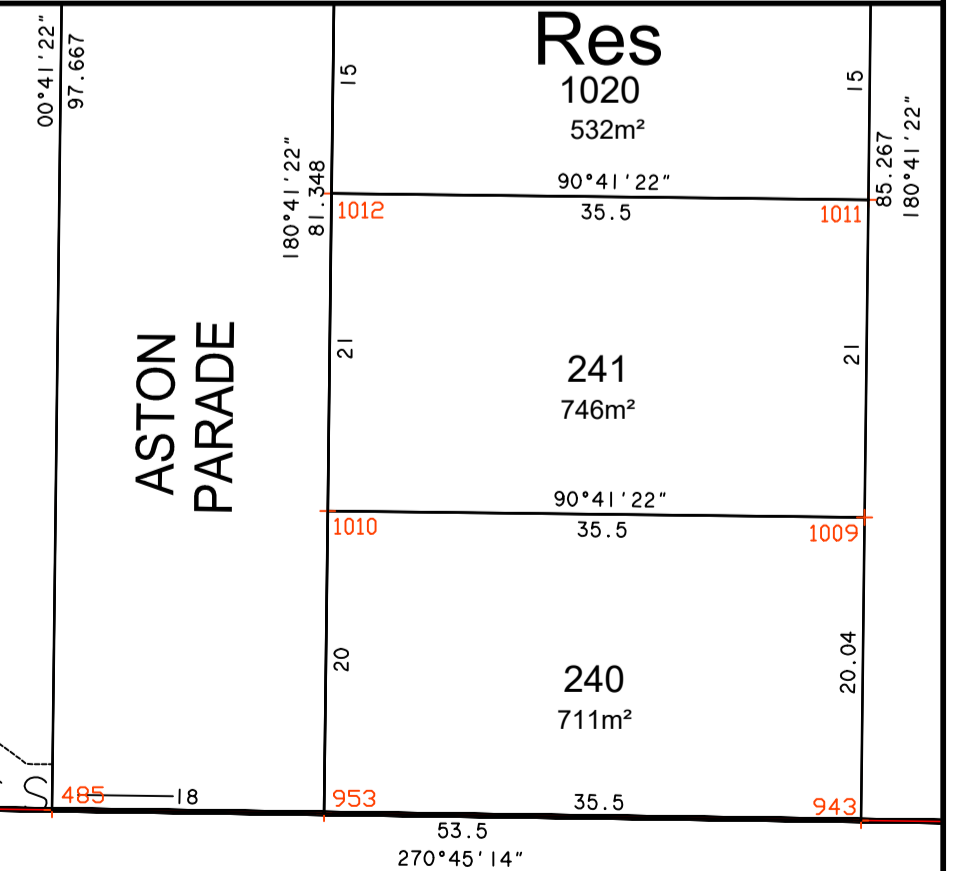


LINE	AZIMUTH	DISTANCE
L1	154°44'51"	2.64

SEE BELOW LEFT FOR CONTINUATION



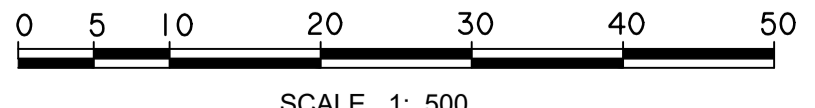
BOUNDARY LAYOUT IS BASED ON FYFE DRAWING 2100P01-r45

SEE RIGHT FOR CONTINUATION

FYFE
 HEAD OFFICE
 Level 1, 124 South Terrace
 Adelaide SA 5000
 GPO Box 2450
 Adelaide SA 5001
 www.fyfe.com.au

PLAN DETAILS	
COUNCIL :	DC OF MOUNT BARKER
MAP SHEET :	6627-07-m & n
CT REFS :	CT 6111/53 CT 6111/54

LEVEL DATUM :	N/A	DATA FILE/S :	21003C00.LOT
LEVEL AUTHORITY :	N/A	SURVEYOR :	
CO-ORD DATUM :	MGA94 PLANE SYSTEM BASED ON PSM 6627/14226 09/04/2009		



NO.	REVISION	STAFF	CHECK	DATE
9	AMEND ALLOTS 245-249	FYF	JJB	07/10/20
8	AMEND ALLOTS 214, 219, 220 & 1535	NJJ	AGM	23/10/19
7	AMEND ALLOTS 244-247, 253, 254 AND RENUMBER TO SUIT	AGM	JJB	01/08/19
6	AMEND ALLOTS 251-254, 257 & ROAD Y	AYW	JJB	24/09/18

LANSER DEVELOPMENTS CALCULATION PLAN - STAGE 8 ALLOTMENTS 100 & 101 IN D91349 HUNDRED OF STRATHALBYN MOUNT BARKER				INSTRUCTION : 21003/9/4 DATE 12/10/2020 SHEET 1 OF 1 REV. 9
DRAWING 21003C08-r9				