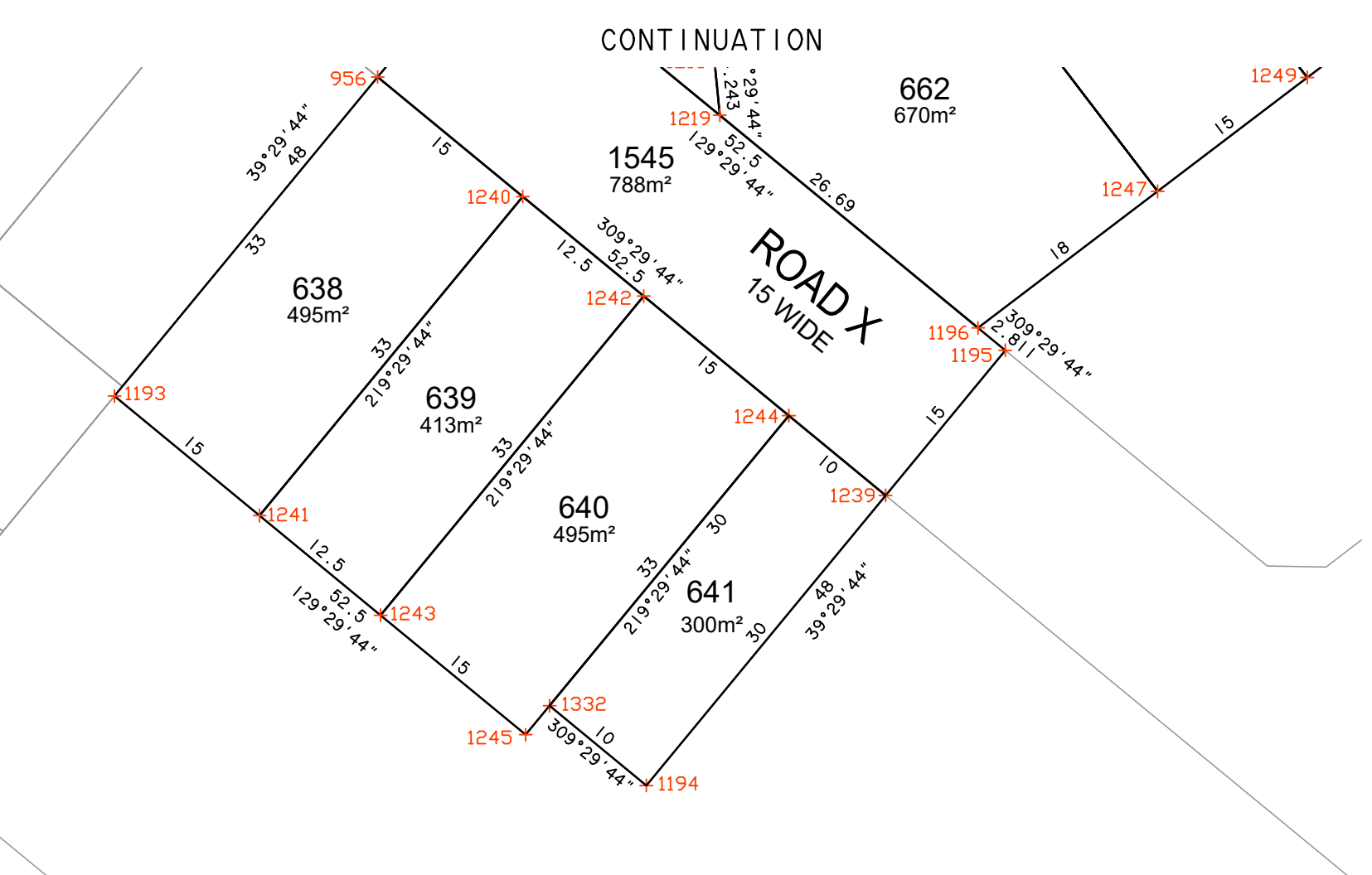


SITE PLAN



SHORT LINE SEGMENTS

LINE	AZIMUTH	DISTANCE
L1	237°43'18"	0.65
L2	219°29'44"	1.592
L3	162°16'25"	3.439
L4	142°43'18"	2

HEAD OFFICE
 Lvl 2, 124 5th Terrace
 Adelaide SA 5000
 GPO Box 2450
 Adelaide SA 5001
 www.fyfe.com.au

PLAN DETAILS
 COUNCIL : DC OF MOUNT BARKER
 MAP SHEET : 6627-07-n
 CT REFS : CT 6245/361
 ALLOTMENT LAYOUT BASE ON DRAWING 21003P01 - r 63

0 5 10 20 30 40 50

SCALE 1: 500

LEVEL DATUM : N/A DATA FILE/S : 21003C00.LOT
 LEVEL AUTHORITY : N/A SURVEYOR :
 CO-ORD DATUM : MGA94 PLANAR BASED ON PSM 6627/14226

NO.	REVISION	STAFF	CHECK	DATE
1	AMEND LOTS 283-298,641,675,676,669-671,679-682,685-688	JYR	JJB	04/06/21
0	PREPARED FOR INFORMATION	AGM	JJB	13/04/21

INSTRUCTION : 21003-10-2
 DATE 08/09/2021
 SHEET 1 OF 1
 REV. 1

LANSER DEVELOPMENTS
 CALCULATION PLAN
 ASTON HILLS - STAGE 9
 PORTION OF PIECE 3063 in D125215
 MOUNT BARKER

DRAWING 21003-10-2-SV-CA16-r2