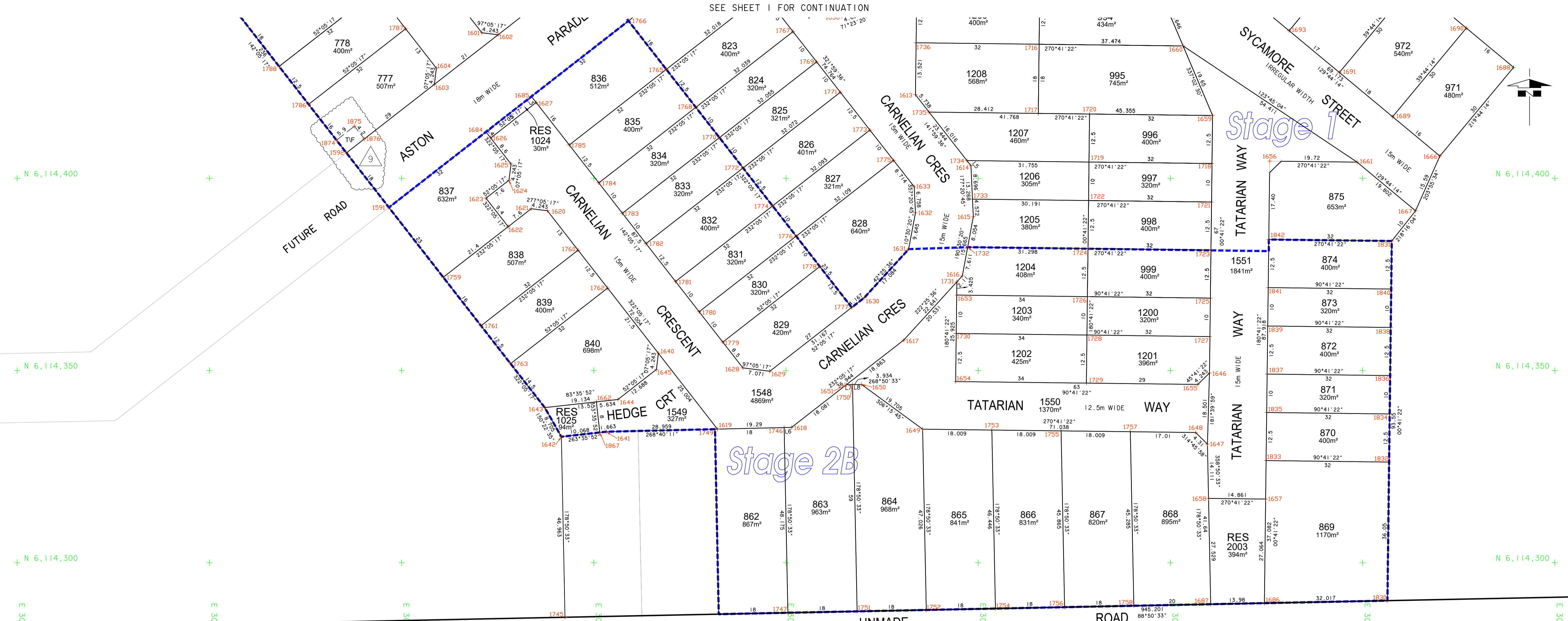
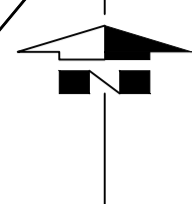
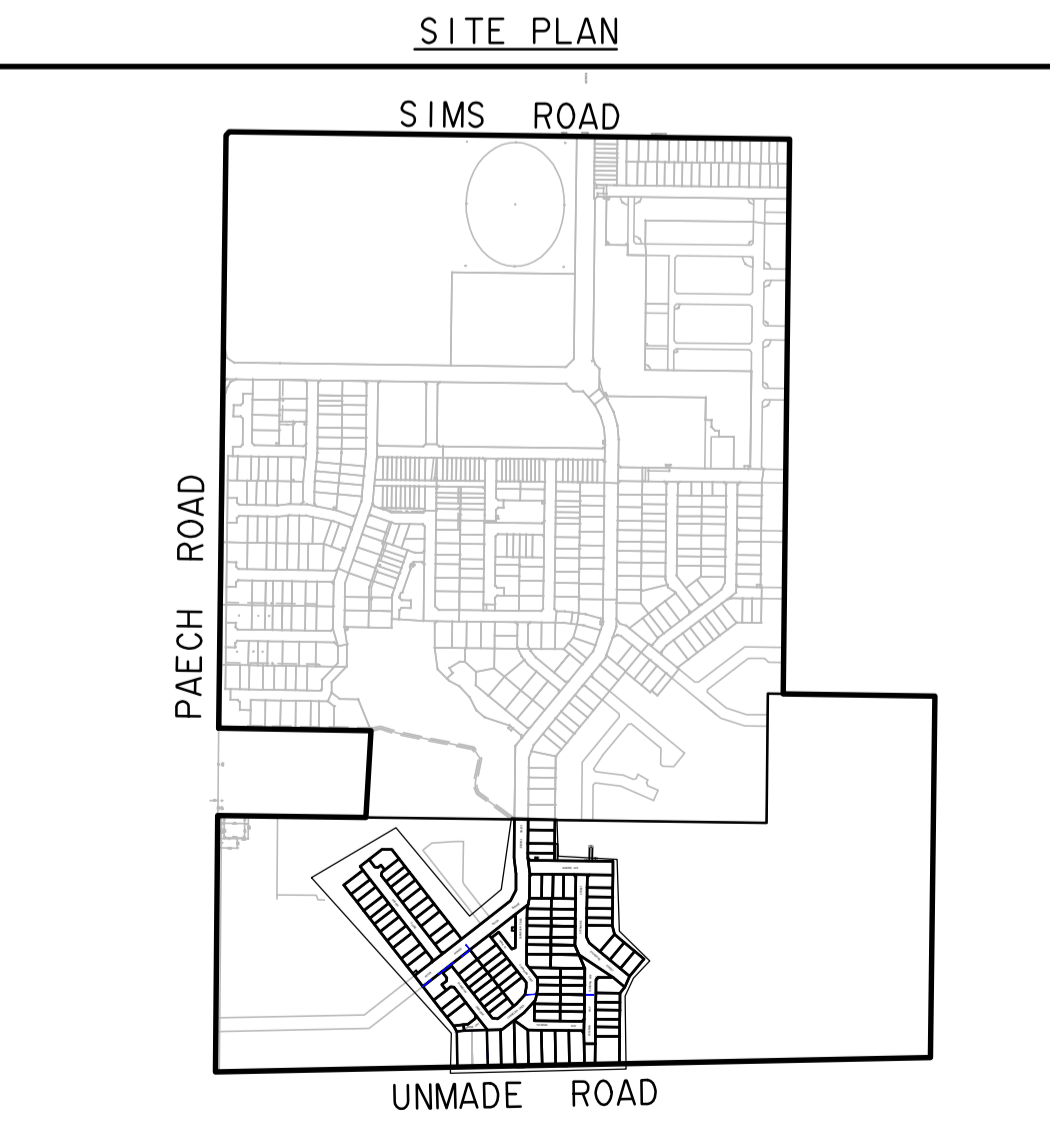


SEE SHEET 1 FOR CONTINUATION



N 6,114,400
 N 6,114,350
 N 6,114,300
 E 307,400
 E 307,450
 E 307,500
 E 307,550
 E 307,600
 E 307,650
 E 307,700
 E 307,750
 E 307,800



SHORT LINE SEGMENT TABLE

LINE	AZIMUTH	DISTANCE
L1	296°23'20"	2.602
L2	352°33'11"	1.324
L3	142°05'17"	2
L4	322°05'17"	2
L5	321°59'36"	1.689
L6	88°40'11"	1.93
L7	88°50'33"	1.583
L8	88°50'33"	2.351

FYFC
 ADELAIDE
 12, 124 South Terrace
 Adelaide SA 5000
 GPO Box 2450
 Adelaide SA 5001
 T 61 8 8201 9600
 www.fyfc.com.au

PLAN DETAILS

COUNCIL: MOUNT BARKER DISTRICT COUNCIL

MAP SHEET: 6627-07-n

CT REFS: CT5719/464

SCALE 1: 500

LEVEL DATUM: N/A DATA FILE/S: 21003C00.LOT

LEVEL AUTHORITY: N/A SURVEYOR: GWB

CO-ORD DATUM: MGA94 PLANAR BASED ON PSM 6627/14226

NO.	REVISION	STAFF	CHECK	DATE
5	AMEND LOTS 1220 & 1221, REMOVE LOTS 860 & 861	AGM	JJB	15/06/22
9	TF IN STAGE 2A A777 UPDATED	FYF	JJB	21/08/23
8	TF ADDED TO ALLOT 777	FYF	JJB	24/07/23
7	AMEND LOTS 840 & 875, ADD RES 1025	AGM	JJB	08/12/22
6	ADD T/F EASEMENTS	AGM	JJB	13/09/22

LANSER DEVELOPMENTS

CALCULATION PLAN - STAGES 1 & 2 PAECH LAND
 PORTION OF SECTION 4496
 HUNDRED OF STRATHALBYN
 MOUNT BARKER

INSTRUCTION: 21003/40/7

DATE: 21/08/2023

SHEET: 2 OF 2

REV: 9

DRAWING 21003-40-7-SV-CA17-9