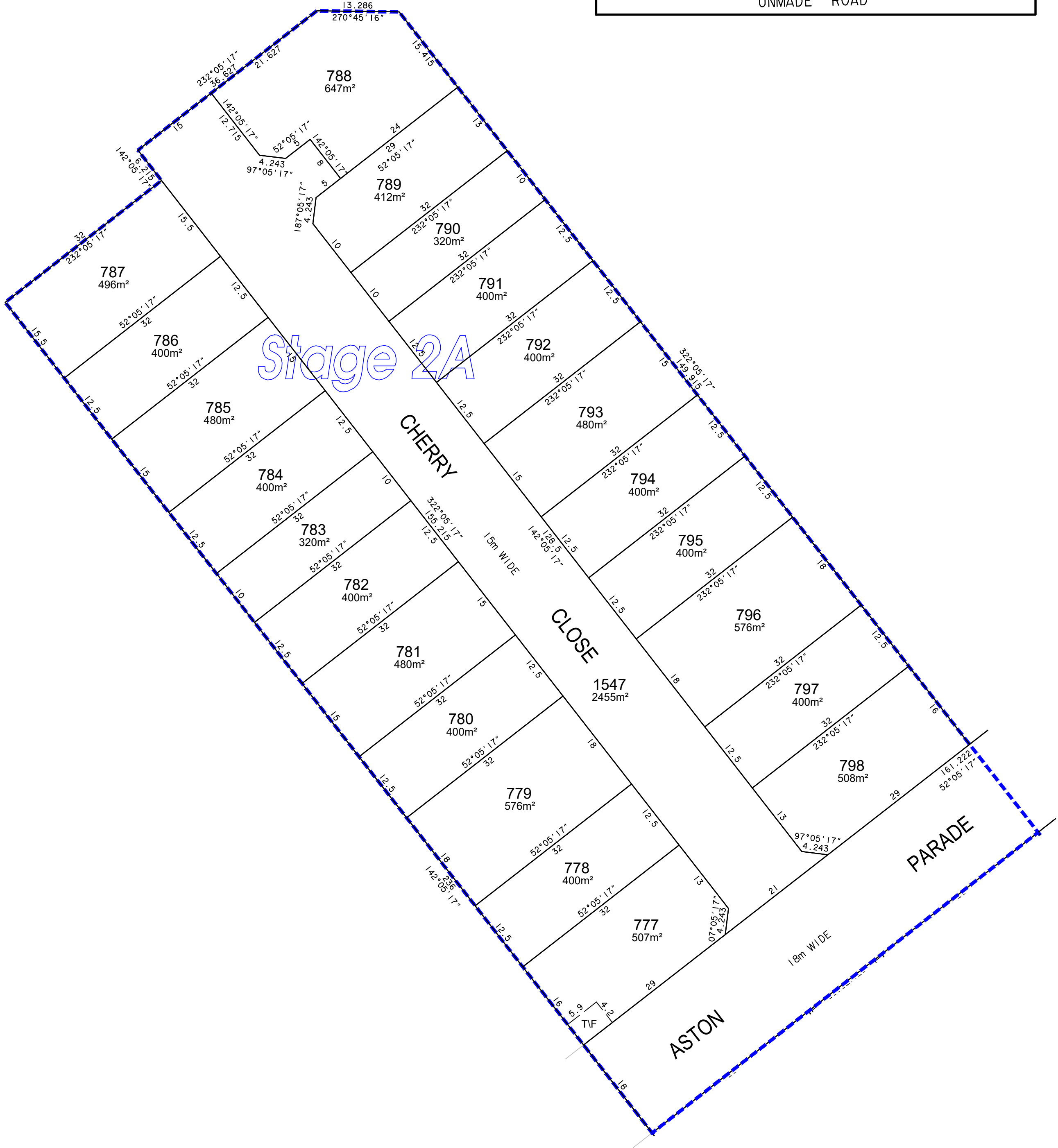
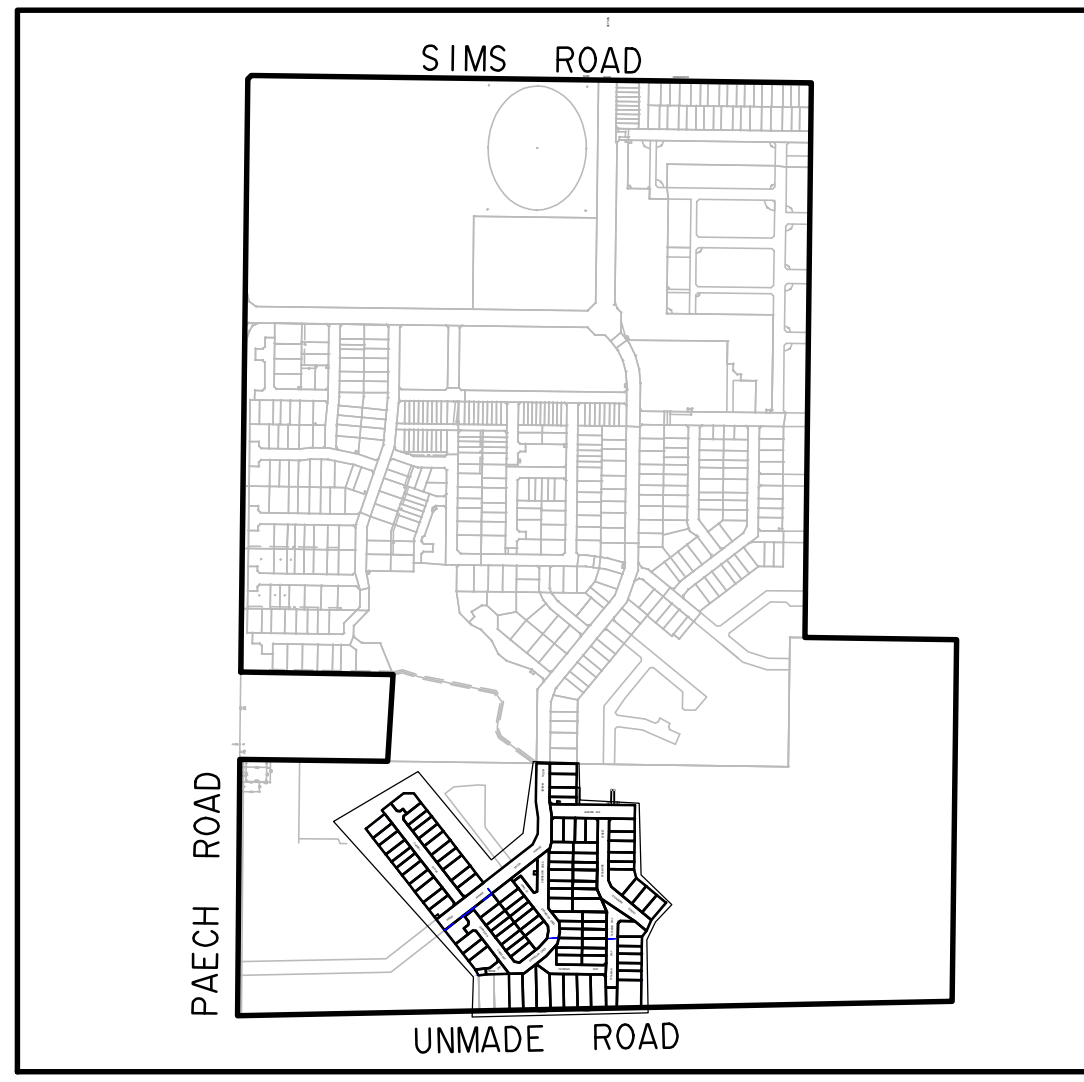


SITE PLAN



SHORT LINE SEGMENT TABLE

LINE	AZIMUTH	DISTANCE
L1	296°23'20"	2.602
L2	352°33'11"	1.324
L3	142°05'17"	2
L4	322°05'17"	2
L5	321°59'36"	1.689
L6	88°40'11"	1.93
L7	88°50'33"	1.583
L8	88°50'33"	2.351

INSTRUCTION	21003-40-7
DATE	21/08/2023
SHEET	1 OF 1
REV.	9

ASTON HILLS - PAECH	
CALCULATIONS PLAN - 2A	
PORTION SECTION 4496	
HUNDRED OF STRATHALBYN	
MOUNT BARKER	
DRAWING: 21003-40-7-SV-CA17-r9.dwg	

SCALE	1:500
LEVEL DATUM	AHD
LEVEL AUTHORITY	
CO-ORD DATUM	

PLAN DETAILS	MOUNT BARKER
COUNCIL	MOUNT BARKER
MAP SHEET	
CT REFS	

NO.	REVISION	STAFF	CHECK	DATE
9	STAGE 2A TF IN A777 UPDATED	FYF	JJB	21/08/23
8	TF ADDED TO ALLOT 777	FYF	JJB	24/07/23
7	STAGE 2A SHEET ADDED	FYF	JJB	28/06/23

ADELAIDE
 L2, 124 South Terrace
 Adelaide SA 5000
 GPO Box 2450
 Adelaide SA 5001
 T 61 8 8201 9600
 www.fyfe.com.au